

CONCISE SEPARATIONS

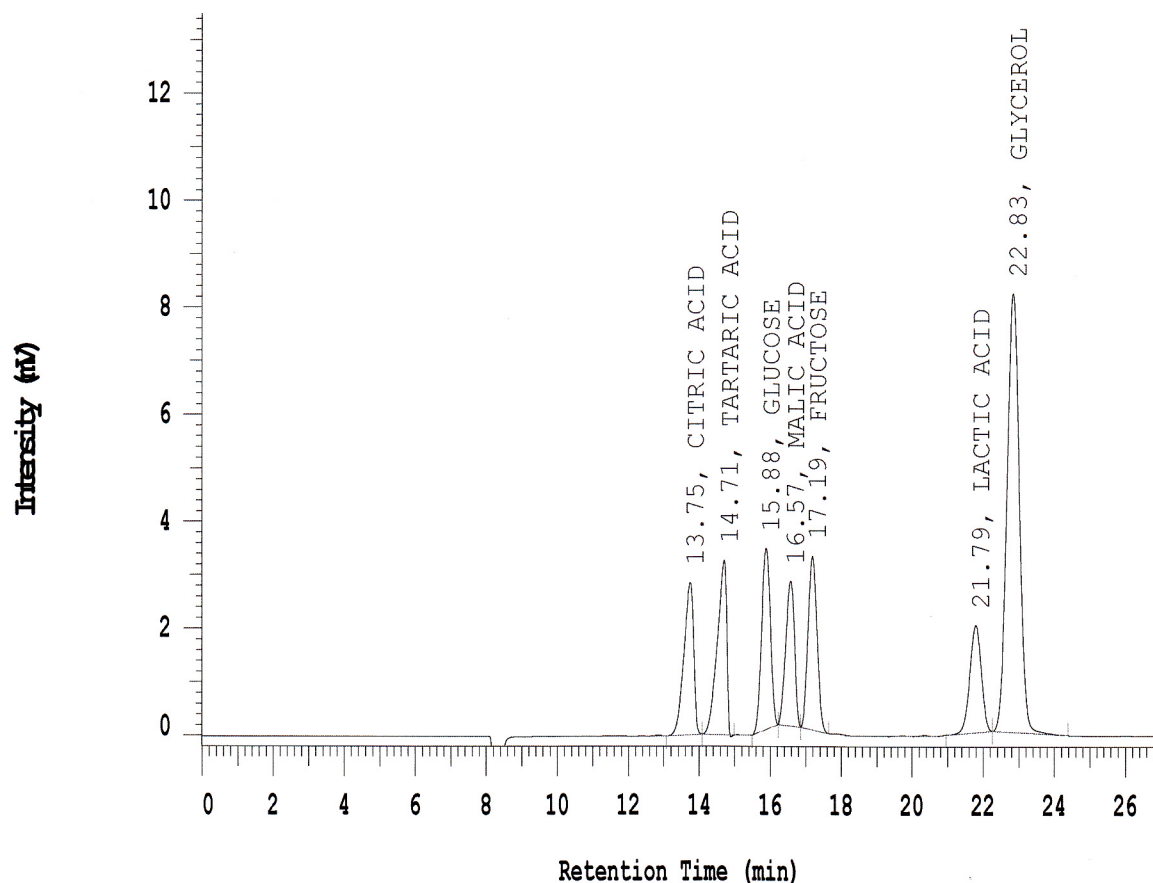
Coregel ION 300

P/N: ICE-99-9850

Processing Method: ION300
Sample Name: Test Mixture
High Selectivity
Column #: 12922936

Volume: 20 uL
Length: 300 mm
ID: 7.8 mm
Polymer Lot: 132-5

Refractive Index



Solvent A: 0.0085N H2SO4

Pressure: Pump A Pressure Profile: Max: 654.4 Min: 640.2

Flow Rate: 0.4 ml/min

Temperature: 62.0C

| RT (min) | Name | k' | Asym | N (EUP) | Res (EUP) | Alpha | S/N | Noise (uV) |
|----------|---------------|-------|------|---------|-----------|-------|-----|------------|
| 13.75 | CITRIC ACID | 10.85 | 0.75 | 11315 | --- | --- | --- | --- |
| 14.71 | TARTARIC ACID | 11.68 | 0.65 | 14412 | 1.91 | 1.08 | --- | --- |
| 15.88 | GLUCOSE | 12.69 | 1.05 | 19016 | 2.47 | 1.09 | --- | --- |
| 16.57 | MALIC ACID | 13.29 | 0.86 | 19760 | 1.49 | 1.05 | --- | --- |
| 17.19 | FRUCTOSE | 13.82 | 1.01 | 20903 | 1.29 | 1.04 | --- | --- |
| 21.79 | LACTIC ACID | 17.78 | 0.99 | 21491 | 8.60 | 1.29 | --- | --- |
| 22.83 | GLYCEROL | 18.68 | 1.02 | 20699 | 1.70 | 1.05 | --- | --- |

