

HANABI-PVI Metaphase Spreader

HANABI-PVI
Metaphase Spreader



HANABI-PVI
Metaphase Spreader

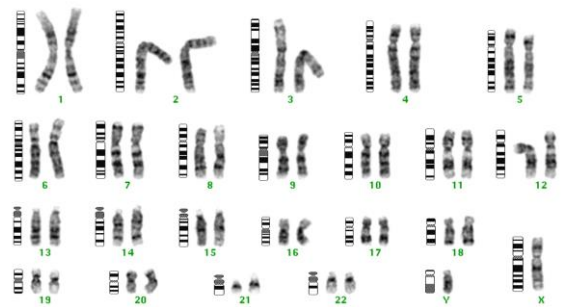
The **HANABI-PVI** Metaphase Spreader are instruments that provide **optimized environmental conditions** for the preparation of metaphase chromosome spreads.

Temperature, humidity and airflow are set and rapidly stabilize, thus ensuring that when samples are dropped and chromosomes spread on microscope slides, they are dried in a consistent and reproducible manner.

Excessive spreading and chromosome overlaps are minimized.

The sample tubes and the slides are traceable by bar codes. After automated spreading, the spreads on the slides can be further treated and stained to be analyzed.

The chromosome spreading process for conventional **FISH**, **CGH** and **G-banding** analysis of samples cultured and harvested from blood, bone marrow, and similar fluids is now streamlined and is easily carried out regardless of skill level.



ADSTEC

<http://www.ads-tec.co.jp>

E-mail: sales@ads-tec.co.jp

ADSTEC Corporation

568-1-1, Innai-cho, Funabashi-shi, Chiba 273-0025 Japan

Tel: +81-47-495-9070 Fax: +81-47-495-8809

Specifications

2019.9.17

#	Items	Specifications	Remarks
1	Number of glass slides	5 slides / cycle	
2	Slide glass	76 × 26 mm (t = 0.8 - 1.2 mm)	75 × 25 mm (t = 0.8 - 1.2 mm) is available
3	Enabled tip	Gilson D200	Tip for 200 μl
4	Sample dropping volume	10 - 30 μl	
5	Number of spot	1 - 2	Pipette guide for 2 spots is included as accessory items
6	Processing time	Around 5 minutes / cycle	At processing 5 slides and drying time as 1.5 minutes
7	Spreading mode	5° / 10° / 15°	At using tilting parts and pipette guide for tilting mode (Option)
8	Dry-Index value (Drying degree)	0.0 - 20.0	
9	BASE value	0.0 - 30.0	BASE block part
10	WALL value	0.0 - 30.0	U-shaped WALLS in spreading chamber
11	BATH value	0.0 - 30.0	Humidifying BATH part
12	Drying time	0.1 - 999.9 sec	
13	Volume of BATH	135 ml	Available 10 hours continuous use
14	Operating environment	15 - 25 ° C, 20 - 60 %RH	Non-condensing
15	Storage environment	0 - 40 ° C, 0 - 95 %RH	Non-condensing
16	Atmospheric pressure	800 - 1114 hPa	2000 meters or lower
17	Input voltage	100 - 120, or 200 - 240 VAC	Factory option
18	Frequency	50 / 60 Hz	
19	Power consumption	600W	
20	Externals size	400 × 380 × 320 mm (W × D × H)	Without switches
21	Weight	Around 18 kg	
22	Safety standards	CE mark	EN61326-1, EN61010-1

