



# FLIR M500 Series

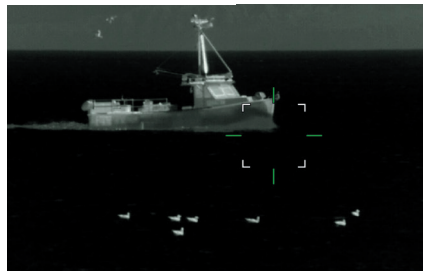
M500 MAXIMUM-PERFORMANCE MULTI-SENSOR CAMERA



The M500 is the most powerful commercially available Teledyne FLIR thermal camera for maritime application. M500 uses the same high-performance cooled mid-wave infrared sensor used in high-performance TeledyneFLIR military systems. Compared to long-wave infrared cameras, the M500 mid-wave detector provides twice the image sensitivity (quality) of other long-wave systems and delivers 35% better range performance. Cooled mid-wave sensors perform better through fog and other atmospheric obscurants than long-wave systems. And the M500's internal gyro stabilization provides a steady view in rough seas. Engineered for extremes, the M500 is well suited for agencies or organizations that need the maximum range performance and superior image quality.



High sensitivity mid wave detector offers the best image quality and long range object recognition



Video tracking automatically follows a selected target with the thermal or visible cameras



HD color and low-light camera with 30x optical and 12x E-Zoom, respectively

SPECIFICATIONS	
M500	
<b>THERMAL CAMERA</b>	
Field of View	Optical 28° x 21° WFOV to 2° x 1.5° NFOV
Video Refresh Rate	25 Hz (PAL) / 30 Hz (NTSC)
Focal Length	19mm (Wide) to 275mm (Narrow)
Optical Zoom	1x to 14x (continuous)
Digital Zoom	4x Continuous
Detector Type	Cooled MWIR InSb 640x512 Focal Plane Array
<b>VISIBLE CAMERA</b>	
Detector Type	1/2.8" CMOS
Lines of Resolution	Up to 1920 x 1080 @ 30fps
Minimum Illumination	Low Light Setting ON: 0.006 lux / Low Light Setting OFF: 0.1 lux
Optical Zoom	30x
Digital Zoom	12x
Focal Length	129 mm to 4.3 mm
Field of View	63.7° x 35.8° WFOV to 2.3° x 1.29° NFOV
<b>SPOTLIGHT</b>	
Type, Lumens, Beam°	LED, 580 Lumens, 5° Divergence Angle
<b>SYSTEM SPECIFICATIONS</b>	
Gyro Stabilized	Yes
Video Tracking	Yes
Pan/Tilt Adjustment Range	360° Continuous Pan, ± 90° Tilt
Analog Video Output	NTSC or PAL, 30 Hz or <9 Hz
Analog Video Connector Types	F-type BNC with BNC-to-RCA adapter included for video out
Network Video Output	Four, Independent H.264 Network Video Streams
HD-SDI Lossless Video Output	Yes
Power Requirements	12-24V DC
Power Consumption	250 W (max w/heaters)
<b>ENVIRONMENTAL</b>	
Operating Temperature Range	-13°F to +131°F (-25°C to +55°C)
Storage Temperature Range	-56° F to + 176°F (-50°C to +80°C)
Automatic Window Defrost	Standard at Power-Up
Sand/Dust Ingress	Mil-Std-810E
Water Ingress	IPX6
Shock	15 g vertical, 9 g horizontal
Vibration	IEC 60945; MIL-STD-810E
Lightning Protection	Standard
Salt Mist	IEC60945
Wind	100 knot (115.2 mph)
EMI	IEC 60945
<b>PHYSICAL</b>	
Weight	32 lb (14.5 kg)
Size	Camera: 10.8" (273mm) x 15.7" (398mm) / Camera with Top-Down Riser: 12.8" (324mm) x 18.1" (459mm)
<b>CLEAR WEATHER RANGE PERFORMANCE</b>	
Detect a 30-foot Vessel	5.0nm (9260m)
NATO Target 2.3m x 2.3m @50%	3.5nm (6480m)
Detect Human Sized Target	2.0nm (3625m)

**USA**  
Teledyne FLIR LLC  
9 Townsend West  
Nashua, NH 03063  
United States of America

**EUROPE**  
Teledyne FLIR LLC  
Marine House, Cartwright Drive,  
Fareham, PO15 5RJ  
UK

**WARRANTY**

The FLIR M500 cameras is backed by a 2-year/10,000 hour limited warranty.

For complete details on FLIR's industry-leading warranty please visit [www.teledyneflir.com/maritime](http://www.teledyneflir.com/maritime).

Equipment described herein is subject to US export regulations and may require a license prior to export. Diversion contrary to US law is prohibited. Imagery for illustration purposes only. Specifications are subject to change without notice.  
©2021 Teledyne FLIR LLC, Inc.

